

# EXTERIOR BLINDS C80

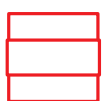


Czech made

The C80 exterior blinds are one of the most effective exterior shading solutions. They are made from highly durable materials that can withstand all weather conditions. The strong slats provide maximum insulation.

## ADVANTAGES

- Highly durable material.
- Slats can be tilted in both directions.
- Suitable for administrative and office spaces.
- Available in a variety of colours.



Robust slats cover a larger area



Made of durable material



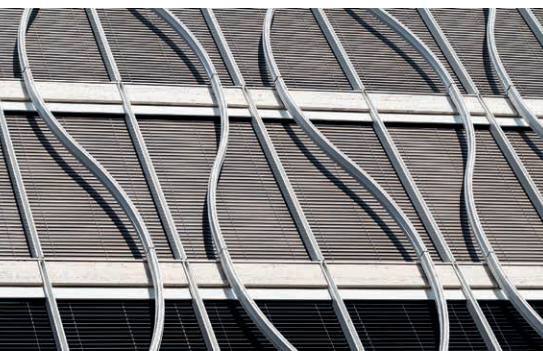
Great design element for buildings



Excellent shading control



Controllable via a smart home system



**SOLAR**  
TECHNIK

PROXIMITY AND TRADITION

+420) 577 100 522

info@solartechnik.cz

@solartechnik.cz

@solar\_technik\_cz

www.solartechnik.cz

# MORE INFORMATION ON THE PRODUCT

## CONSTRUCTION

- The 80 mm-wide, C-shaped slats allow smooth tilting in both directions.
- Aluminium structure with 0.42 mm thick slats and perforated edges for increased strength.
- Stability and durability are ensured by metal elliptical or plastic guide pins.
- The 56 × 58 mm galvanised steel top profile guarantees a robust support structure.

## FEATURES

- Dimensions for motor operation: width: 600–5,000 mm, height: 500–5,000 mm, maximum area: 20 m².
  - Dimensions for manual operation: width: 400–5,000 mm, height: 500–5,000 mm, maximum area: 9 m².
- Both methods have a wind resistance of up to 74 km/h.

## COLOURS

- Blind slats available in **22 colours**.
- Accessories available in any RAL colour.



## CONTROL

- Manual operation using a crank and maintenance-free bevel gearbox.
- Motor operation using a switch or remote control.
- Possible to connect to a smart home system.

